

MPS Event Message

POTUS Visit 3rd-5th June 2019



Introduction

The President of the United States of America, Donald Trump, is visiting the UK for an official state visit from 3rd to the 5th June 2019. The visit will largely focus in London with official and state engagements on the 3rd and 4th June, and in Portsmouth on the 5th.

A significant security plan is being developed together with plans to police protest and endeavour to maintain business as usual for businesses, organisations, residents, visitors alike and keep disruption to a minimum.

Maps of the affected roads on Monday and Tuesday are included at the end of this message. More specific details are being provided separately to organisations and residents within the shaded areas. Currently the main day of protest is expected to be Tuesday 4th June starting in Trafalgar Square at about 11am. This area, and Parliament Square and Whitehall are expected to remain busy through the day. We anticipate some protest activity in Parliament Square on Monday morning and later in the evening.

If protests move elsewhere, contingency traffic plans are in place to reduce congestion and manage traffic flows. These will be communicated via existing email groups, as well as social media channels via Transport for London (@TfLTravelAlerts) and Met Police (@MetPoliceEvents)

MPS Advice messages to Stakeholders, Organisations and Businesses in Central London

Further information and details of future engagement events will be circulated over the coming days and online links are also available on the **Met Website** (www.met.police.uk) with advice including:

www.met.police.uk

Your people

- **Within the shaded areas ensure staff have their building, security or government passes and I.D (Some access will be subject to checks)**
- In the days leading up to the event, ensure all employees are fully briefed.
- Your premises should have a strong, visible management presence who should identify themselves to the police in the event of any trespassing or damage.
- Security officers, where possible, should be highly visible.
- **All staff remain vigilant and report any suspicious activity to security and/or the police.**
- Ensure all members of staff are fully aware of any emergency and evacuation procedures



MPS Event Message

POTUS Visit 3rd-5th June 2019



Your premises

- Minimise the number of entry points to your premises.
- Ensure that the outside areas are clear of debris, dustbins, ladders or tools and equipment.
- Check that your emergency equipment, grab bags, first aid supplies and walkie-talkies are in place, easy to get to and working properly. Advisable to test them beforehand.
- Check and test building security and emergency systems.
- Ensure CCTV coverage is fully operational and can provide the highest recording resolution possible.
- If your building has scaffolding erected or is in close proximity of scaffolding, let your security staff know.
- **Report any suspicious activity to police either 999 in an emergency or call 101.**

- <https://www.met.police.uk/crime-prevention/business-robbery/safeguard-business-against-events/>

- <https://met.police.uk/advice-and-information/terrorism-in-the-uk/staying-safe-from-terrorism/>

- Useful protective security advice can be found here:

<https://www.cpni.gov.uk/>

<https://www.gov.uk/government/organisations/national-counter-terrorism-security-office/>



**METROPOLITAN
POLICE**



MPS Event Message

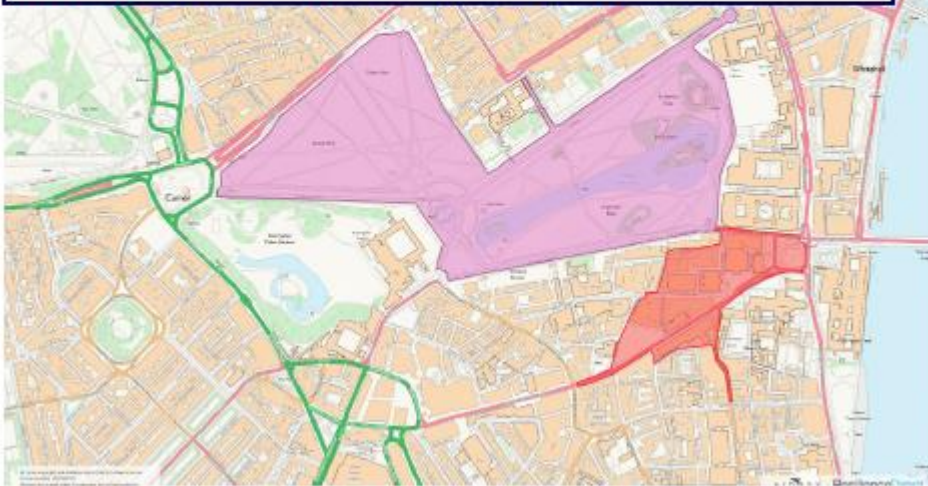
POTUS Visit 3rd-5th June 2019

Road closures to vehicles in the two shaded areas Monday 3rd June from 0700

Diversions will be in place. Motorists should expect some delays in the surrounding area. Protest activity is anticipated in Parliament Square in the morning and evening. Check TFL Travel Alerts.

Pedestrian access remains open within the shaded areas. Surrounding Tube stations remain open

There are **some sections of Parliament Square and surrounding streets that will be access only, and not open to the general public.** Police Officers will be available to provide directions.



Road closures to vehicles in the large shaded area Tuesday 4th June from 0700

Diversions will be in place. Motorists should expect some delays in the surrounding area. Protest activity anticipated in Trafalgar Square and Parliament Square. Check TFL Travel Alerts.

Pedestrian access remains open within the shaded areas. Surrounding Tube stations remain open

There are **some parts of Whitehall, Parliament Square and Horseguards that will be access only, and not open to the general public.** Marlborough Road will be closed throughout the morning. Police Officers will be available to provide directions.

